



flykil-lite

Flying Insect Killers
&
Washroom Hygiene
Products



Catalogue 2012

Authorised Dealer



Introduction

HOW AVRO FLYKIL-LITE FUNCTIONS

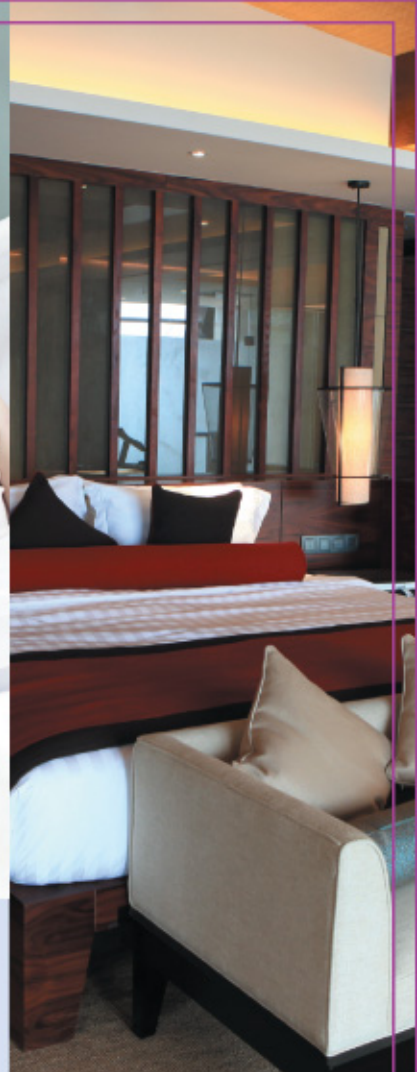
The flying insects are hypnotised and drawn towards the lure tubes of the units and die instantaneously on the electrically charged grid. The dead insects are collected in the catchment tray at the bottom for easy disposal

AVRO FLYKIL-LITE insect killer is the most modern and convenient way of killing flying insects. Low Priced. No Pollution. No Spraying. No Harmful Effects Most Economical. Used World Over.

AVRO FLYKIL-LITE, A MUST FOR

• Hospitals • Laboratories • Hotels • Operation
Theaters • Restaurants • Offices • Sweet Shops •
Bakeries • Canteens • Showrooms • Mess •
Kitchens • Homes • Food Processing Units • Dairies
• Clubs • Fisheries • Swimming Pools • Abattoirs •
Farm Houses • Bottling Plants • Dining Halls
• Pharmaceuticals Ind.

**"Or just any place where the menace of
Flying Insects needs to be curbed."**





flykil-lite

FLYING INSECT KILLER

DOMESTIC MODELS



Moskill Small Super



Moskill Big Super



Specifications

Model	Lamps	Consumption	Unit Size	Material	Covering Area
Moskill Small Super	1x4W	10W	Dia 6.5"	ABS Plastic	100-150sq ft
Moskill Big Super	1x6W	12W	Dia 7"	ABS Plastic	150-250sq ft

General features:

1. 360° wrap-around high tension grid-effectively kills insects.
2. Strong and durable ABS housing-lightweight and portable.
3. Full size grid-effectively kills insects.
4. Removable collection tray-collects dead insects for easy cleaning.
5. Suitable for rooms, small cabins and shops.



flykil-lite

FLYING INSECT KILLER

DOMESTIC MODELS



Domestic Hut Big
(Single)



Domestic Hut
(Double)



Specifications

Model	Lamps	Consumption	Unit Size	Material	Covering Area
Domestic Hut Big (Single)	1x6W	12W	6.5"Lx6"Bx16"H"	ABS Plastic	200-300sq ft
Domestic Hut (Double)	2x6W	20W	8.5"Lx6"Bx16"H"	ABS Plastic	250-400sq ft

General features:

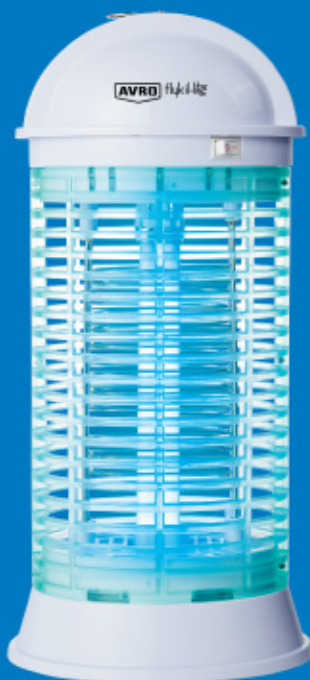
1. 360° wrap-around high tension grid-effectively kills insects.
2. Strong and durable ABS housing-lightweight and portable.
3. Full size grid-effectively kills insects.
4. Removable collection tray-collects dead insects for easy cleaning.
5. Suitable for rooms, small cabins and shops.



flykil-lite

FLYING INSECT KILLER

DOMESTIC MODELS



Commercial Hut CFL



Commercial Hut CFL



Specifications

Model	Lamps	Consumption	Unit Size	Material	Covering Area
Commercial Hut CFL	1x11W	15W	7.5"Lx5.3"Bx16.3"H	ABS Plastic	200-300sq ft
Commercial Hut CFL	1x11W	15W	7.5"Lx5.3"Bx16.5"H	ABS Plastic	200-300sq ft

General features:

1. 360° wrap-around high tension grid-effectively kills insects.
2. Strong and durable ABS housing-lightweight and portable.
3. Full size grid-effectively kills insects.
4. Removable collection tray-collects dead insects for easy cleaning.
5. Suitable for rooms, small cabins and shops.



flykil-lite

FLYING INSECT KILLER

COMMERCIAL MODELS DECORATIVE SERIES



Supersonic I



Supersonic II

Specifications

Model	Lamps	Consumption	Unit Size	Material	Covering Area
Supersonic-I	2x8W	30W	14"Lx4.5"Bx11.5"H	ABS Plastic	300-400sq ft
Supersonic-II	2x10W	40W	17"Lx4.5"Bx11.5"H	ABS Plastic	400-500sq ft

General features:

1. 360° wrap-around high tension grid-effectively kills insects.
2. Strong and durable ABS housing-lightweight and portable.
3. Full size grid-effectively kills insects.
4. Removable collection tray-collects dead insects for easy cleaning.
5. Suitable for offices, restaurants, pantries and icecream parlours.



flykil-lite

FLYING INSECT KILLER

COMMERCIAL MODELS
SLEEK SERIES



Killer 400



Killer 600



Killer 1200

Specifications

Model	Lamps	Consumption	Unit Size	Material	Covering Area
Killer 400	2x8W	30W	14"Lx4.5"Bx11"H	Aluminium Body	300-400sq ft
Killer 600	2x15W	40W	20"Lx4.5"Bx12.5"H	Aluminium Body	400-500sq ft
Killer 1200	2x18W	60W	26"Lx4.5"Bx12.5"H	Aluminium Body	500-600sq ft

General features:

1. High tension grid-effectively kills insects.
2. Strong and durable Aluminium housing-lightweight and portable.
3. Full size grid-effectively kills insects.
4. Removable collection tray-collects dead insects for easy cleaning.
5. Suitable for offices, restaurants, pantries and icecream parlours.



flykil-lite

FLYING INSECT KILLER

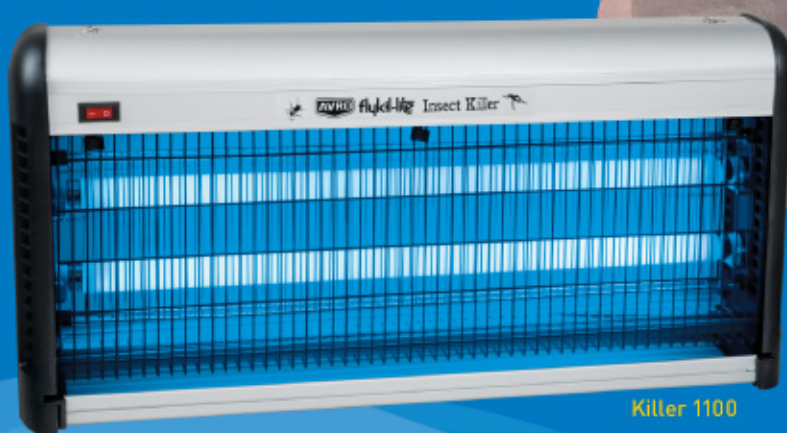
COMMERCIAL MODELS SLEEK SERIES



Killer 700



Killer 900



Killer 1100

Specifications

Model	Lamps	Consumption	Unit Size	Material	Covering Area
Killer 700	2x8W	30W	14"Lx4.5"Bx11"H	Aluminium Body	300-400sq ft
Killer 900	2x15W	40W	20"Lx4.5"Bx12.5"H	Aluminium Body	400-500sq ft
Killer 1100	2x18W	60W	26"Lx4.5"Bx12.5"H	Aluminium Body	500-600sq ft

General features:

1. High tension grid-effectively kills insects.
2. Strong and durable Aluminium housing-lightweight and portable.
3. Full size grid-effectively kills insects.
4. Removable collection tray-collects dead insects for easy cleaning.
5. Suitable for offices, restaurants, pantries and icecream parlours.



flykil-lite

FLYING INSECT KILLER

COMMERCIAL MODELS



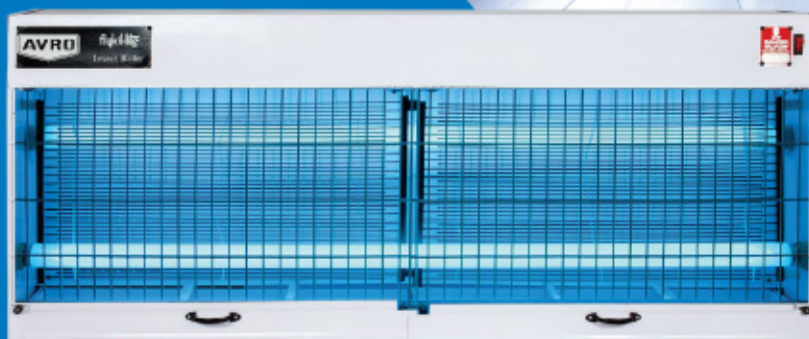
Killer 250



Killer 500



Killer 800



Jumbo Medium Twin



Specifications

Model	Lamps	Consumption	Unit Size	Material	Covering Area
Killer 250	2x6W	20W	9"Lx4.5"Bx10"H	M S Body	200-250sq ft
Killer 500	2x8W	30W	12"Lx4.5"Bx11"H	M S Body	300-400sq ft
Killer 800	2x15W	40W	18.5"Lx10.5"Bx15.5"H	M S Body	400-500sq ft
Jumbo Medium Twin	2x40W	100W	50"L x 9.5"B x 20"H	MS body	800-1000sq ft

General features:

1. High tension grid-effectively kills insects.
2. Full size grid-effectively kills insects.
3. Removable collection tray-collects dead insects for easy cleaning.
4. Suitable for restaurants, hotels, coffee shops, hospitals, food processing units, water bottling plants, meat plants, farm houses and mess.



flykil-lite

FLYING INSECT KILLER

COMMERCIAL MODELS



Killer 1000



Killer 2000



Killer 1000
(Stainless Steel Body)

Specifications

Model	Lamps	Consumption	Unit Size	Material	Covering Area
Killer 1000	2x20W	60W	24.5"Lx10.5"Bx15.5"H	M S Body	500-600sq ft
Killer 2000	2x20W	60W	24.5"Lx10.5"Bx20"H	M S Body	600-800sq ft
Killer 1000 s/s	2x20W	60W	24.5"Lx10.5"Bx15.5"H	Stainless Steel	600-700sq ft

General features:

1. High tension grid-effectively kills insects.
2. Strong and durable Powder coated M.S. housing.
3. Full size grid-effectively kills insects.
4. Removable collection tray-collects dead insects for easy cleaning.
5. Suitable for restaurants, hotels, food processing units, water bottling plants, mess, railway stations, coffee shops and hospitals.



flykil-lite

FLYING INSECT KILLER

WEB SERIES



Web 2



Web 3

Specifications

Model	Lamps	Consumption	Unit Size	Material	Covering Area
Web 2	3x20W	80W	25"Lx4.5"Bx15"H	Fibre Glass	400-500sq ft
Web 3	3x15W	60W	20"Lx4.5"Bx15"H	Fibre Glass	300-400sq ft

General features:

1. High tension grid-effectively kills insects.
2. Strong and durable Fibre Glass housing-lightweight and portable.
3. Full size grid-effectively kills insects.
4. Removable collection tray-collects dead insects for easy cleaning.
5. Suitable for restaurants, hotels, coffee shops, receptions, dinning areas, hospitals and airports.



flykil-lite

FLYING INSECT KILLER

GLUE TRAP SERIES



Glue Trap Series GP-1



Glue Trap Series GP-2



Glue Trap Series GP-3



- No Noise
- No electric grid
- No smell
- No pollution
- International design
- Wall mounted model

Specifications

Model	Lamps	Consumption	Unit Size	Material	Covering Area
GP-1	3x15W	60W	21"Lx4.5"Bx13"H	Fiber Glass	400-500sq ft
GP-2	2x15W	40W	22"Lx6.5"Bx10.5"H	ABS Plastic	300-400sq ft
GP-3	2x15W	40W	22"Lx6.5"Bx10.5"H	ABS Plastic	300-400sq ft

General features:

1. Web Glue trap series is the latest, most effective & innovative system for eliminating flying insects. The insects are attracted to the UVA tubes and are embeded on the special glue board inside the unit.
2. UVA tubes with a spectral peak at 200nm create maximum attraction to insects.
3. Strong and durable ABS housing-lightweight and portable.
4. Suitable for restaurants, hotels, dinning areas, hospitals, icu, operation theaters, offices, food processing units and airports.





SOAP DISPENSERS

MANUAL SOAP DISPENSER



SD-10



SD-08



SD-11

Specifications

Model	Capacity	Material
SD-08	700ml	ABS Plastic
SD-10	600ml	ABS Plastic
SD-11	600x2ml	ABS Plastic

General features:

1. Manually operated
2. Wall mounted
3. Dropping volume 1-2ml
4. Liquid soap & shampoo.





SOAP DISPENSERS

MANUAL SOAP DISPENSERS



SD-01



SD-02



SD-09



Specifications

Model	Capacity	Material
SD-01	500ml	Steel
SD-02	1000ml	Steel
SD-09	500ml	Brass

General features:

1. Manually operated
2. Wall mounted
3. Dropping volume 1-2ml
4. Liquid soap & shampoo.



SOAP DISPENSERS

AUTOMATIC SOAP DISPENSERS



ASD-01



ASD-04



Specifications

Model	Capacity	Material
ASD-01	600ml	ABS Plastic
ASD-04	800ml	ABS Plastic

General features:

1. Infrared detection, motion activated.
2. No more contact & infection
3. Battery operated (use only AA size **Alkaline batteries**)
4. No wiring
5. Dropping volume 1ml
6. Liquid soap & shampoo.



AEROSOL PERFUME DISPENSER

AEROSOL PERFUME DISPENSER



Specifications

Model AEROSOL DISPENSER (Automatic)	Material ABS Plastic	Battery 2x1.5V "D"	Adjustable Time 5-30 min	Effective Area 40 sq. mtr.
---	-------------------------	-----------------------	-----------------------------	-------------------------------

General features:

Suitable for offices, hotels, guest houses, washrooms, restrooms, malls, gyms, clubs, cinemas and public places.



Refill Can



HAND DRYERS

HAND DRYERS



HD-01

SPECIFICATIONS : (HD-01) Automatic
UNIT SIZE : 7"Lx4.3"Bx10"H
MATERIAL : ABS BODY
POWER : 1200 (W) RPM-3600
DRYING TIME : 20-30 Sec.
NOISE LEVEL : 60 db.
DETECTIVE DISTANCE : 50-200mm.
WIND SPEED : > 12M/Sec
AUTO STOP: 15 Sec.



HD-02

SPECIFICATIONS : (HD-02) Automatic
UNIT SIZE : 9.8"Lx7"Bx20"H
MATERIAL : ABS BODY
POWER : 1800 (W) RPM-5000,
DRYING TIME : 15-20 Sec.
NOISE LEVEL : 75 dB.
DETECTIVE DISTANCE : 50-200mm.
WIND SPEED : >20M/Sec.
AUTO STOP : 15 Sec.



HAND DRYERS

HAND DRYERS



HD-03

SPECIFICATIONS : (HD-03) Automatic
UNIT SIZE : 8.6"Lx6"Bx11"H
MATERIAL : ABS BODY
POWER : 1650 (W) RPM-2500,
DRYING TIME : 20-30 Sec.
NOISE LEVEL : 60DB.
DETECTIVE DISTANCE : 50-200mm.
WIND SPEED : > 12M/Sec.
AUTO STOP : 15 Sec.



HD-04

SPECIFICATIONS : (HD-04) Automatic
UNIT SIZE : 9.3"Lx5.5"Bx11.6"H
MATERIAL : ABS BODY
POWER : 1200 (W) RPM 3600,
DRYING TIME : 20-30 Sec.
NOISE LEVEL : 60 db.
DETECTIVE DISTANCE : 50-200mm.
WIND SPEED : >12M/Sec.
AUTO STOP : 15 Sec.



HAND DRYERS

HAND DRYERS



HD-06

SPECIFICATIONS : (HD-06) Automatic
UNIT SIZE : 8.6"Lx6"Bx10.8"H
MATERIAL : S/S 304 (Non Magnetic)
POWER : 1650 (W) RPM-2500,
DRYING TIME : 20-30 Sec.
NOISE LEVEL : 60dB.
DETECTIVE DISTANCE : 50-200mm.
WIND SPEED : >12M/Sec.
AUTO STOP : 20 Sec.



HD-07

SPECIFICATIONS : (HD-07) Automatic
UNIT SIZE : 10.2"Lx8.2"Bx9"H
MATERIAL : S/S 304 (Non Magnetic)
POWER : 2500 (W) RPM-16000,
DRYING TIME : 10-15 Sec.
NOISE LEVEL : 75 DB.
DETECTIVE DISTANCE : 50-200mm.
WIND SPEED : >75M/Sec.
AUTO STOP : 10 Sec.



HAND DRYERS

HAND DRYERS



HD-08 Manual

SPECIFICATIONS : (HD-08)
"Manual on-off"
UNIT SIZE : 10.2"Lx8.2"Bx9"H
MATERIAL : M S BODY
POWER : 2500 (W) RPM-16000,
DRYING TIME : 10-15 Sec.
NOISE LEVEL : 75 DB.
DETECTIVE DISTANCE : 50-200mm.
WIND SPEED : >75M/Sec.



HD-12

SPECIFICATIONS : (HD-12) Automatic
UNIT SIZE : 11.5"Lx6.5"Bx12.5"H
MATERIAL : S/S 304 (Non Magnetic)
POWER : 1800 (W) RPM-20000,
DRYING TIME : 5-10 Sec.
NOISE LEVEL : 78 DB.
DETECTIVE DISTANCE : 50-200mm.
WIND SPEED : > 80M/Sec
AUTO STOP : 10 Sec.



HAND DRYERS

HAND DRYERS



HD-13

SPECIFICATIONS : (HD-13) Automatic
UNIT SIZE : 9.4"Lx7.8"Bx10.2"H
MATERIAL : S/S 304 (Non Magnetic)
POWER : 2100 (W) RPM-16000,
DRYING TIME : 15-20 Sec.
NOISE LEVEL : 75DB.
DETECTIVE DISTANC : 50-200mm.
WIND SPEED : >60M/Sec.
AUTO STOP : 15 Sec.



HD-14

SPECIFICATIONS : (HD-14) Automatic
UNIT SIZE : 10.2"Lx5.5"Bx9"H
MATERIAL : S/S 304 (Non Magnetic)
POWER : 2500 (W) RPM-15000,
DRYING TIME : 10-15 Sec.
NOISE LEVEL : 60dB.
DETECTIVE DISTANCE : 50-200mm.
WIND SPEED : >12M/Sec.
AUTO STOP : 15 Sec.



JET HAND DRYER

JET HAND DRYER

NEW



SPECIFICATIONS : (JET HAND DRYER) Automatic
UNIT SIZE : 11.4"Lx8.6"Bx26.7"H
MATERIAL : ABS BODY
POWER : 1650 (W) RPM-16000,
DRYING TIME : 5-10 Sec.
NOISE LEVEL : 80dB.
DETECTIVE DISTANCE : 50-200mm.
WIND SPEED : >90M/Sec.
AUTO STOP : 15 Sec.

General features:

1. "No touch" hand drying ensures complete hygiene.
2. High-speed brushless DC motor to produce jet air flow, drying your hands within 5-10 sec.
3. Built in timer to prevent over use.
4. Specially suitable for hotels, offices, airports, shopping malls, stores and other public places.



Jet Hand Dryer





HAIR DRYERS

HAIR DRYERS



SPECIFICATIONS :

HAIR DRYER (Wall Mounted)
UNIT SIZE : 7.6"Lx3.7"Bx6.6"H
MATERIAL : ABS Plastic
POWER : 1200w(Max), 300w(Min)

SPECIFICATIONS :
HAIR DRYER (Wall Mounted)
with shaver socket
UNIT SIZE : 7.6"Lx3.7"Bx6.6"H
MATERIAL : ABS Plastic
POWER : 1200w(Max), 300w(Min)



General features:

Suitable for hotels, guest houses, beauty parlours, spa and clubs.





C-FOLD DISPENSERS

C-FOLD DISPENSERS



CFD-01



CFD-02



CFD-03



CFD-04

Specifications

Model	C Fold Tissues	Unit Size	Material
CFD-01	250-300	10.25"Lx4"Bx9.5"H	ABS Plastic
CFD-02	550-600	10.25"Lx4"Bx14"H	ABS Plastic
CFD-03	250-300	10.25"Lx4"Bx9.5"H	Stainless Steel
CFD-04	550-600	10.25"Lx4"Bx14"H	Stainless Steel

General features:

Suitable for hotels, guesthouses, offices, beauty parlours, spa, clubs and public toilets.



AUTOMATIC SHOE SHINE MACHINES

AUTOMATIC SHOE SHINE MACHINES



SS-1

SPECIFICATIONS : SS-1 (Automatic)
UNIT SIZE : 14" Lx8" Bx11.5" H
MATERIAL : Black wooden finish
BRUSHES : 1 Black and 1 Brown
POWER : 40W (220V AC)
AUTO CUT : 15 Sec.



SS-2

SPECIFICATIONS : SS-2 (Automatic)
UNIT SIZE : 14.5" Lx8" Bx13" H
MATERIAL : Stainless steel finish
BRUSHES : 1 Black and 1 Brown
POWER : 40W (220V AC)
AUTO CUT : 15 Sec.

General features:

Suitable for schools, offices, restrooms, hotels, guesthouses, gyms, airports, hospitals and golf clubs.





AUTOMATIC SHOE SHINE MACHINES

AUTOMATIC SHOE SHINE MACHINES



SS-3

SPECIFICATIONS : SS-3 (Automatic)
UNIT SIZE : 15"Lx8"Bx10"H
MATERIAL : Metal body
BRUSHES : 1 Red and 1 Black
POWER : 40W (220V AC)
AUTO CUT : 15 Sec.

SPECIFICATIONS : SS-4 (Automatic)
UNIT SIZE : 20"Lx12.5"Bx18.5"H
MATERIAL : Stainless Steel finish
BRUSHES : 1 Red and 1 Black
POWER : 40W (220V AC)
AUTO CUT : 15 Sec.



SS-4
(with sole cleaner)

General features:

Suitable for schools, offices, restrooms, hotels, guesthouses, gyms, airports, hospitals and golf clubs.



AIR CURTAINS

COMMERCIAL



Specifications:

Model	Dimension	Motor Power (W)	Motor Power	Air Velocity	Suitable For Door	Noise Level
Normal Velocity	10"Bx13"H	250W	.33HP	>15-17m/s	upto 7ft	< 70dB
High Velocity	14.5"Bx11"H	375W	.50HP	>20-22m/s	upto 8ft	< 75dB
Extra Velocity	17"Bx13"H	650W	.75HP	>23-25m/s	upto 10ft	< 80dB
Super Extra High Velocity	20"Bx15"H	750W	1HP	>25-28m/s	upto 12ft	< 85dB

Sizes available : 2½ft, 3ft, 3½ft, 4ft, 5ft, 6ft
Also available in Stainless Steel body



AIR CURTAINS

SLEEK SERIES



Specifications:

Model	Dimension	Installation Height	Power		Air Speed(m/s)		Air Flow(m ³ /h)		Noise(dB)	
			High	Low	High	Low	High	Low	High	Low
3 ft	900*230*212mm	3.5-4.5m	405	380	20	16	2200	1760	56	51
3½ ft	1000*230*212mm		430	395			2200	1760	57	52
4 ft	1200*230*212mm		510	480			3000	2400	58	53
5 ft	1500*230*212mm		660	615			3700	2960	61	56
6 ft	1800*230*212mm		780	740			4400	3520	64	59



ULTRASONIC PEST REPELLERS

ULTRASONIC PEST REPELLERS



ULTRASONIC PEST REPELLER
SINGLE



ULTRASONIC PEST REPELLER
TRIPPLE

Specifications

Model	Material	Coverage Area
Ultrasonic Pest Repeller [Single]	MS Body	300sq. ft.
Ultrasonic Pest Repeller [Tripple]	MS Body	600sq. ft.

General features:

It is an electronic device producing high frequency ultrasonic sound waves between 20 to 25 khz. This sound is inaudible to human ears but intolerable and damaging to the nervous system of rats. "Result", rats run away from the area covered by Avro Ultrasonic Repeller, within a few days to few weeks of the installation.

CURRENCY CHECKERS

CURRENCY CHECKERS



CC-1



CC-2
with magnifying glass



CC-3
with credit card detector

Specifications

Model	Consumption	Material
CC-1	6wX 1 (9")	MS Body
CC-2	6wX 1 (9")	MS Body
CC-3	6wX 2 (9")	ABS Body

*UVA TUBES FOR FLYKIL-LITE INSECT KILLER



Specification for UVA Tubes

TUBE	LENGTH	USED IN MODEL
4W	6"	[Moskill Small Super/Domestic Hut Small]
6W	9"	[Moskill Big Super/Domestic Hut Single & Double/K-250]
8W	12"	[K-400/K-500/K-700/Super Sonic-I]
10W	13"	[Super Sonic-II]
11W/CFL	9"	[Commercial Hut CFL]
15W	18"	[K-600/K-800/K-900/WEB-3/G.P-1/G.P-2/G.P-3]
18/20W	24"	[K-1000/K-1100/K-1200/K-2000/K-3000/WEB-2]
40W	48"	[Jumbo Medium Twin]

(H.T) TRANSFORMER FOR FLYKIL-LITE INSECT KILLER



STARTERS FOR FLYKIL-LITE INSECT KILLER



MAGNETIC BALLAST (CHOKE) FOR FLYKILITE INSECT KILLERS



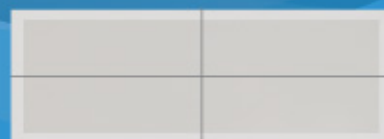
GLUEBOARDS FOR FLYKILITE GLUE TRAP SERIES INSECT KILLERS



[Big Glue Board for GP-1]



[Small Glue Board for GP-1]



[White Glue Board for GP-2, GP-3]